



Proposed Modification to Operations at Haerses Road Quarry

Community Information Sheet No. 2

August 2019

Dixon Sand Pty Limited (Dixon Sand) have engaged Umwelt (Australia) Pty Limited (Umwelt) to prepare a Statement of Environmental Effects (SEE) including a Social Impact Assessment (SIA) for a proposed modification to operations at the Haerses Road Quarry at Maroota, within The Hills Shire Council Local Government Area (LGA).

From April to August 2019 Dixon Sand and Umwelt have consulted with stakeholders proximal to the Haerses Road Quarry to introduce the proposed modification and to identify and document potential impacts and opportunities for consideration within the assessment. This current Community Information Sheet:

- summarises the information collected through consultation with stakeholders
- identifies the perceived issues and impacts of the Proposed Modification
- summarises the outcomes of the environmental assessment process.

What is the Proposed Modification?

The Proposed Modification allows for:

- a small extension in extraction area of approximately 1 ha and modification to the buffer at the northern end of the quarry
- an increase in extraction rate from 250,000 tpa to 495,000 tpa
- an increase in the amount of VENM and ENM to be imported to the quarry from 100,000 tpa to 250,000 tpa
- an increase in the number of trucks permitted to travel to and from the quarry from 56 per day to 180 per day.

Figure 1 shows the current quarry layout and proposed additional extraction area and bund locations.

Assessing the Proposed Modification

Dixon Sand is committed to minimising impacts on both the community and surrounding environment. Dixon Sand has consulted with the NSW Department of Planning, Infrastructure and Environment (DPIE) in relation to the Environmental Assessment Requirements (EARs) for the Proposed Modification. Based on advice from the DPIE, the SEE will:

- outline the key features of the Proposed Modification;
- assess any potential environmental or social impacts; and
- outline recommended measures to minimise and manage potential impacts.

It is intended that the SEE will be lodged with the DPIE in September 2019 and the public will be invited to provide comments and make submissions at that time. The SEE will be available on the DPIE website and hard copies will also be available for viewing at selected locations.

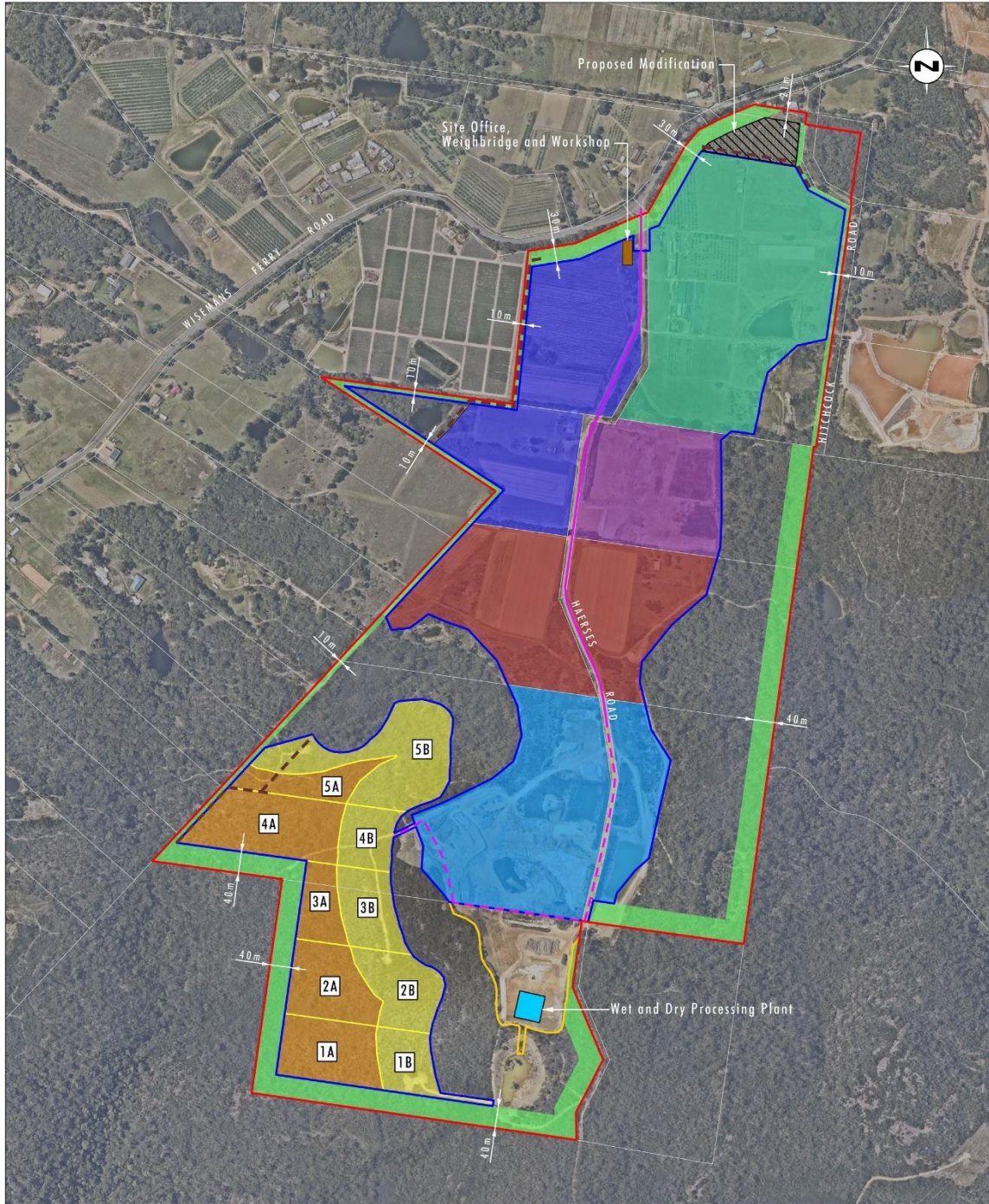


Image Source: Nearmap (Dec 2018)
 Data Source: Mc Kinlay Morgan & Associates Pty Ltd (2019)

0 100 250 500m
 1:10 000

Legend

- | | | |
|------------------------------------|---------------------------------------|------------------------|
| Haeres Road Quarry Site | Approved Extraction Area Stage 1 | Sealed Haul Road |
| Processing and Stockpiling Area | Approved Extraction Area Stage 2 | Approved Acoustic Bund |
| Proposed Extraction Area Extension | Approved Extraction Area Stage 3 | |
| Buffer Zone | Approved Extraction Area Stage 4 | |
| Approved Extraction Area | Approved Extraction Area Stage 5 | |
| Approved Extraction Area A | Site Office, Weighbridge and Workshop | |
| Approved Extraction Area B | Wet Processing Plant | |
| Extraction Cell Number | Indicative Unsealed Haul Road | |

FIGURE 1
 Quarry Layout and
 Proposed Modification Area



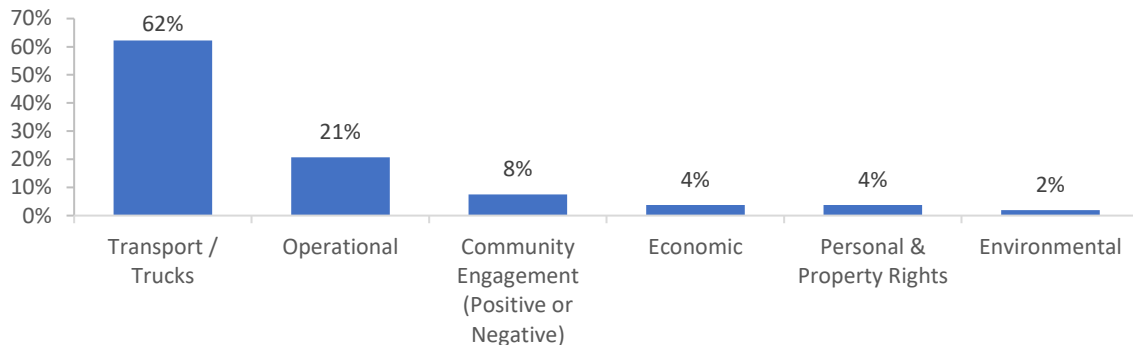
Community Consultation

The SIA considers how the proposed modification has the potential to impact on people – their way of life, culture and community. Over past months, Dixon Sand and Umwelt have been contacting key stakeholders in Maroota to identify their issues, concerns, and aspirations as part of the SIA program. Consultation carried out to date has included the following.

- An initial information sheet (Community Information Sheet 1) – which included a description of the Proposed Modification and an invitation for residents to provide feedback to members of the project team (distributed to approximately 75 local residents in Maroota).
- Further meetings, telephone interviews and information provision (undertaken by Dixon Sand and Umwelt) with residents from Maroota and along the haul route.
- Telephone calls and emails to key government agencies.

As identified above, local residents contacted Umwelt and Dixon Sand in response to Community Information Sheet 1 via email and telephone to outline their concerns with the proposed modification. Umwelt offered additional follow up interviews to these residents to further inform the SIA and confirm concerns and identify potential mitigation strategies.

The concerns raised during discussions were largely those related to the proposed increase in truck movements such as safety concerns, unsuitability of existing roads, truck start times and the potential for cumulative impacts with other industrial and housing developments nearby. Identified impacts on social amenity due to operational activities at the quarry itself included those associated with dust and noise emissions, disruptions to the visual landscape due to stockpiling and minor extension of the quarry. A range of other issues of concern were also identified to a lesser extent (see **Figure 2**).



Note: Multiple responses allowed; proportions based on number of mentions of each theme

FIGURE 1

Perceived Community Impact Themes (n=9 residents)

Community members also suggested several measures to reduce the identified impacts. Key strategies included speed limit reductions, improving the regulation of truck driver behaviour and keeping the local community informed through forums and media.

Assessment of Key Issues

The SEE will provide a detailed assessment of all relevant environmental and social factors which could be affected by the proposed modification. The following provides a summary of the impacts on the key issues identified by as part of consultation.



Traffic and Transport

- On days when the maximum number of truck movements are generated, the proposed modification could see typical daily flows on Wisemans Ferry Road and Old Northern Road (south of Wisemans Ferry Road) increase by 2.7% over the existing average daily traffic flows. The predicted traffic levels would remain well within the capacity of both roads.
- The maximum number of heavy vehicle movements per hour between the hours of 6am and 7am would remain at 20 (as currently approved).
- Dixon Sand will continue to promote and actively implement the Maroota Local Traffic Management Policy. The policy will be reviewed regularly to ensure its effectiveness is maintained.
- Dixon Sand will continue to communicate with truck drivers and their companies to reiterate key safety messages and will maintain a proactive stance towards management of reckless driving and non-compliant vehicle standards.

Noise

- Road traffic noise is predicted to remain compliant with road traffic noise criteria.
- The proposed modification does not introduce any significant noise sources and noises levels received at surrounding residences as a result of the proposed modification are not anticipated to increase perceptibly from those that are generated by the currently approved operations.
- Dixon Sand is committed to implementing all reasonable and feasible mitigation measures to minimise the noise levels received at surrounding residences.

Air Quality

- Dispersion modelling of the proposed modified operations has been undertaken and predicts ongoing compliance with both airborne particulate matter and deposited dust criteria.
- Dixon Sand will continue to monitor operations daily and implement additional dust suppression or modify operations if necessary, to reduce dust emissions.

Visual Amenity

- The minor 1 ha extension of the extraction area (which represents a 1.3% increase in the overall disturbance footprint of the Quarry) would be screened by vegetation and a vegetated earth bund. Council regulations regarding buffers to nearby properties will be maintained.

Next steps

The next step in the assessment process includes the finalisation of the SEE and lodgement with the DPIE. The DPIE will place the SEE on public exhibition at which point the community will be notified and invited to provide comments and make submissions.

Further information

For more information on the assessment process see the DPIE website at

<https://www.planningportal.nsw.gov.au/development-assessment-and-consent>

For further information on the proposed modification or related enquiries contact Dixon Sand on the telephone numbers provided below or use their website www.dixonsand.com.au

David Dixon

Dixon Sand Pty Ltd

david@dixonsand.com.au

Ph: 0414 330 490

Hunny Churcher

Dixon Sand Pty Ltd

environment@dixonsand.com.au

Ph: (02) 4566 6348

Ruth Tapp

Umwelt

rtapp@umwelt.com.au

Ph: (02) 4950 5322